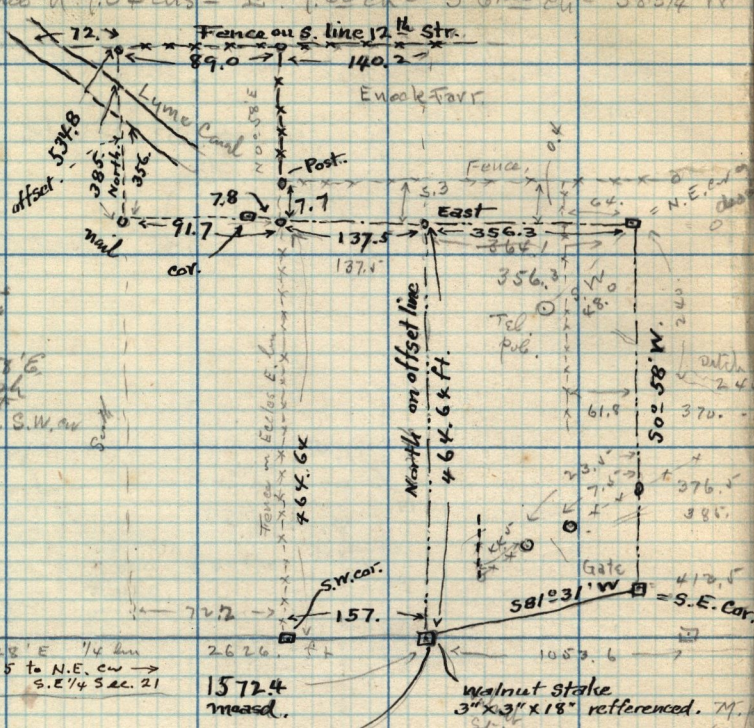


Description of deed from Aaron Farr to Hans C. Larson Part of N.E. 1/4 Sec. 21 Tp. 6-N-R. 1-W - Beg. 18.52 chs. W. from the S.E. Cor. of said 1/4 Sec. Running thence N 7.04 chs - E. 7.60 ch - S 6.25 ch - S 83 3/4° W 7.64 chs to beg.



This fence on E. side E. line is not straight, and in places there is no fence. I run his N. to 12 1/2 str. to ascertain the course. The fence should cur. and find same to be N 0° 58' E. and on this basis establish the N.W. cor. of Larson's tract 7.2 ft. W. of fence at Farr, S.W. cor.

N 35° 20' E
to Epic PK.
A 183 + 08.68
N 89° 15' W
1/4 Sec. line
N.W. Cor.
S.E. 1/4 Sec.
21-T. 6
N. R. 1. W
B 133 + 68.92

N 89° 22' E 1/4 km
2625.35 to N.E. cor.
S.E. 1/4 Sec. 21

1572.4
measrd.

74.9
N.E. 75° W.
to S.W. Cor. Larson's
frame house.

note. from S.E. Cor. - W. 42. ft. to the line where Larson claims he purchased.

See Field Book I. p. 48-49-50
" " " " " 32
" " " " " 89

12.2
50° 52' W
2597.9
to 1/4 cor.